

Altivar Soft Starter ATS480 Integrated Digitally for Easy Engineering, Selection and Downtime Reduction

THE SOLUTION PROVIDES OPERATIONAL INTEGRITY FOR PEOPLE, PROCESSES, AND ASSETS

The new Altivar Soft Starter ATS480 is using FDT/DTM technology for intelligent device management (configure, control, diagnostics and maintenance) directly in EcoStruxure Control Expert, EcoStruxure Process Expert and SoMove software using the same software brick (DTM). FDT/DTM technology standardizes the communication interface between field devices and host systems. The DTM contains a uniform data structure for managing soft starter parameter access.

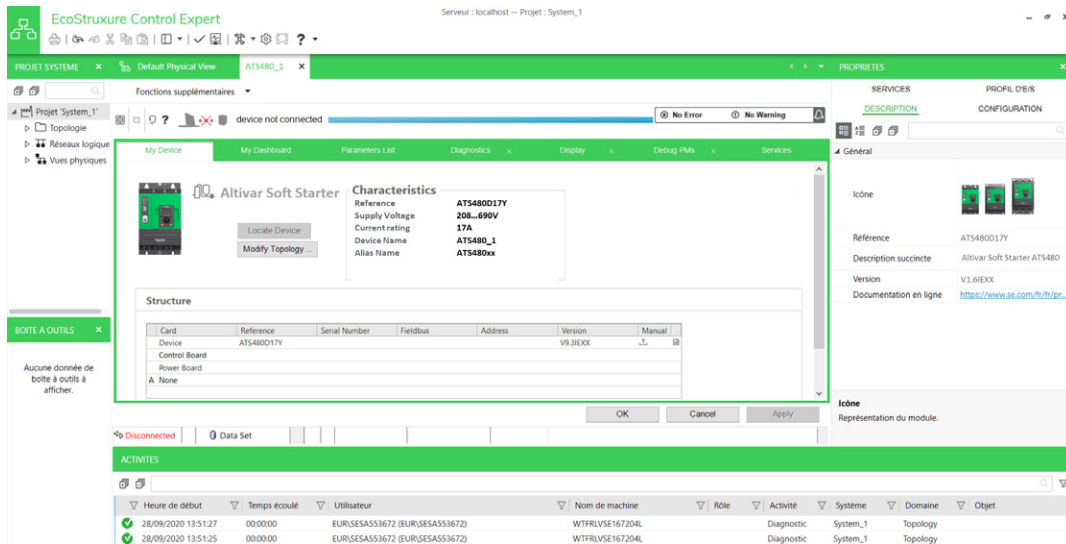
The Altivar™ Soft Starter ATS480, Soft starters for Process and Infrastructures from 4 to 900 kW, is the next evolution of soft starters that are digitally optimized to meet cyber security standards. Designed to address process infrastructures, ATS480 simplifies project execution and maximizes the availability of your applications, even in the most demanding environments.

With EcoStruxure tools (EcoStruxure Motor Control Configurator, EcoStruxure Motor Management Design, EcoStruxure Plant Builder, EcoStruxure Automation Device Maintenance, ...), integrated automation system, and ATS480 Device Type Manager, process engineering time is drastically reduced from selection to project execution.



With ATS480 DTM, associated derived function block (DFB), and faceplate:

- Quickly write the PLC program in EcoStruxure Control Expert
- Integrate ready-to-use faceplate in AVEVA System Platform
- Adapt and modify parameters without stopping the installation
- Set, monitor, and diagnose from the engineering station
- DFB and faceplate available in General Purpose libraries



Altivar Soft Starter ATS480 DTM parameterization in EcoStruxure Control Expert

Advantages of the DTM library in EcoStruxure Control Expert:

- Single tool for configuration, setup, and diagnostics
- Network scan for automatic recognition of network configuration
- Ability to add/remove, copy/paste configuration files from other soft starters in the same architecture
- Single input point for all parameters shared between the ePAC (programmable controller) and the Altivar Soft Starter ATS480
- Creation of profiles for implicit communication with the ePAC as well as dedicated profiles for programs with DFBs (derived function blocks)
- Integration in the fieldbus topology
- Soft starter configuration is an integral part of the EcoStruxure Control Expert project file (STU) and the archive file (STA)

Ecostruxure Plant Integration

The association of Altivar Soft Starter ATS480 with Schneider Electric automation control systems like EcoStruxure Process Expert (for hybrid systems) offers a high-performance, global automation and motor control solution with optimized Total Cost of Ownership (TCO). The solution provides operational integrity for people, processes, and assets, with improved maintenance support to help reduce downtime ensuring operation continuity. It offers operational insight by accessing more information to optimize the process. Based on market standards (FDT/DTM, Ethernet, etc.), it is a sustainable, scalable solution that enables processes to be adapted easily and affordably. An integrated automation system powered by EcoStruxure offers the following benefits:

- More efficient projects
- Optimized operations



ATS480 DTM library



New Altivar Soft starter ATS480



Product selector for ATS480